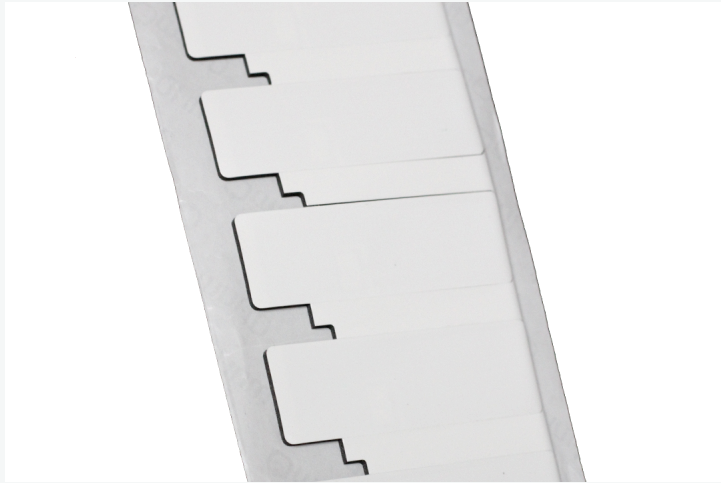


# [ Products ] you can identify with



## Flex 1200

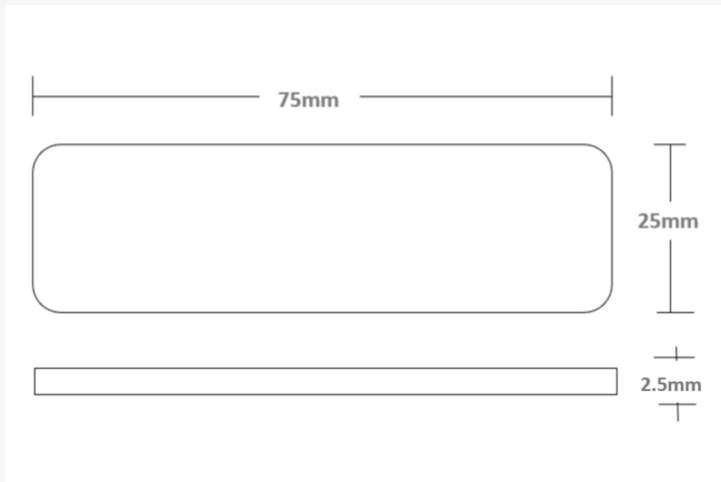
Omni-ID Flex 1200 is a low profile, cost effective RFID tag with superior RF performance. Supplied with an over laminate surface for increased durability, the Flex 1200 is designed specifically as a low cost alternative to hard tags for applications demanding the protection of an over laminate and read ranges up to 12 meters.

### Applications

With its flexibility and consistent RF performance, the Flex 1200 is ideally suited to applications such as:

- Office equipment
- Portals & Returnable Transit Items (RTI)
- Light outdoor use

### Dimensions



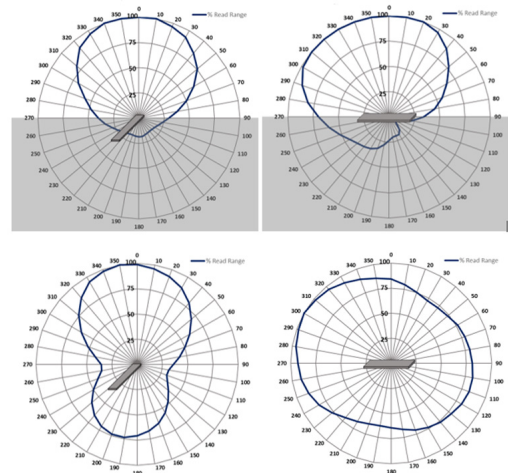
Measurements shown in mm

### Physical Specifications

<b>Material</b>	White synthetic label with transparent over laminate
<b>Size</b>	75 x 25 x 2.50 mm 2.95 x 0.98 x 0.10 in
<b>Weight (g)</b>	1.66
<b>Attachment</b>	Film adhesive (std)

Product dimensions shown above are the maximum. Batch to batch variation could be within 5%. Unspliced sections will be within 0.2mm tolerance.

### Radiation Patterns



# [ Products ] you can identify with

## Environmental Specifications

<b>Operating Temperature</b>	-40°C to +85°C
<b>Survivability</b>	-40°C to +85°C
<b>IP Rating</b>	IP68
<b>Shock &amp; Vibration Tolerance</b>	MIL-STD-810 G

## Certifications

CE, RoHS, US&Canada (C1D1/D2) certified (option)



## Operational Specifications

<b>Radio Protocol</b>	EPC Class 1 Gen2v2
<b>Frequency Range</b>	866 – 868 MHz (EU) 902 – 928 MHz (US)
<b>Read Range – Fixed Reader</b>	Up to 12m (on metal), Up to 8m (off metal)
<b>Read Range – Handheld Reader</b>	Up to 4m (off metal)
<b>On Metal or Balanced</b>	Optimized for metal
<b>Material Compatibility</b>	Metal
<b>IC Type (Chip)</b>	Monza R6-P
<b>Memory</b>	EPC - 128 (96) bits User - 32 (64) bits Unique TID - 48 bits

Quoted performance achieved using standard testing methodology on Aluminium test plates. Read range is dependent on multiple factors such as; RFID reader transmit power and receiver sensitivity, asset material and environment. Please see the Omni-ID On Metal Labels User Guide for more detail.  
2 EPC and User memory are reprogrammable. UTID is locked at point of manufacture by IC manufacturer.

## Ordering Information

<b>Warranty</b>	1 year
<b>Product Options</b>	:303 (Customization) :307 (US&Canada (C1D1/D2) certified) :536 (Textured surface adhesive)
<b>Part Number / Order Codes / Order Numbers</b>	160 (Eu, US)

For product or technology inquiries email: [sales@omni-id.com](mailto:sales@omni-id.com).  
Visit [omni-id.com](http://omni-id.com) to learn more about the complete line of **Omni-ID RFID** products